

Roller Blind Installation Guide

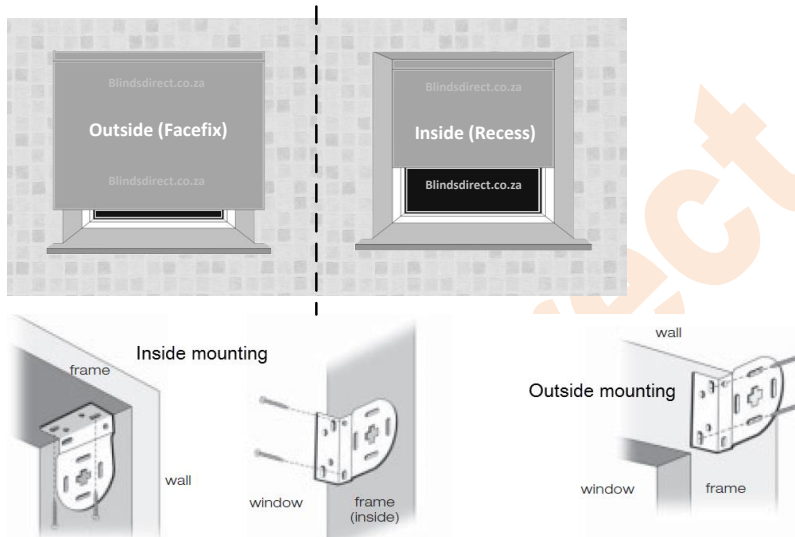
Checklist: You will need the following to perform the installation.

- Drill with hammer function for masonry (with 5.5mm drill bit).
- Screwdriver (Phillips)
- Measuring tape
- Marker (pencil)
- Ruler (recommended)
- Step ladder
- Spirit level (recommended)
- Hammer (not required but ideal)
- Vacuum to clean dust from drilling

Hanging your blind:

Step1.

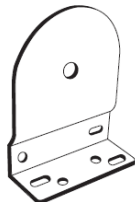
Before starting you need to decide if the blind is an Inside (Recess) or Outside (Facefix) blind installation. This will determine your blind position. Remember if Inside (Recess) you should ensure the blinds will not be obstructed but obstructions like window handles or burglar bars for example. Refer to illustration below for inside and outside mounting positions.



Step2. (Two persons recommended for this step)

You will need to start by first mounting the Tab bracket – Mount the roller (side with chain controller) to the Tab bracket but ensure the blind is rolled up from the back as per the illustration below. Hold the blind and bracket to the position you require and then mark the position with a marker. Now drill and screw the Tab bracket in place.

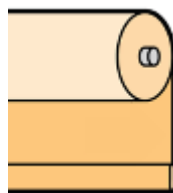
Note: The Tab should be installed on the left if you ordered a left hand controller, right for a right hand controller.



Pin Bracket



Tab Bracket



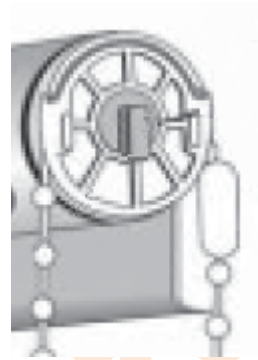
Step3.

Now we need to mount the Pin bracket – Hold the roller in the mounted bracket and then fit the pin bracket onto the other end of the roller pin (ensuring the pin is sufficiently secured). Position the Pin bracket in position but critical you ensure the blind is level otherwise the roller will not roll evenly. Now mark the position of the Pin bracket, remove the roller and then drill/screw the bracket in place.

Step 4. Fitting the roller

Before proceeding to mount ensure the fabric is rolled up and then chain stopper is in the closest position as per illustration below.

Mount the pin into the pin bracket ensuring it's secure. Then by applying some pressure on the roller into the pin side mount the roller into the Tab bracket.



Step 5. Installing the chain loop

Push Start by putting the chain through the loop as illustrated below, then pulling the chain loop down but not too tight as to impede the chain mark the position using a marker. Now drill and screw the chain loop in place with the chain still looped. Now proceed and secure the chain loop cover.



TROUBLESHOOTING

Chain stopper prevents the roller from going up or down

1. Pull the chain till the blind rolls up and it reaches the stopper.
2. Remove the roller from the brackets and then manually roll the blind to the desired up position ensuring the chain stopper is then in the closest position as per illustration below.

