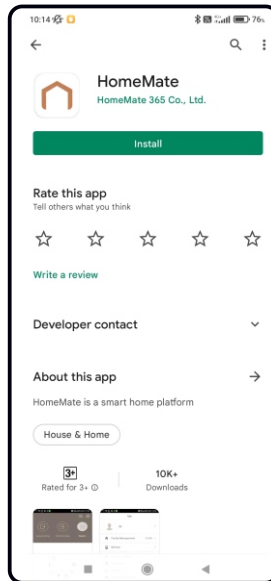
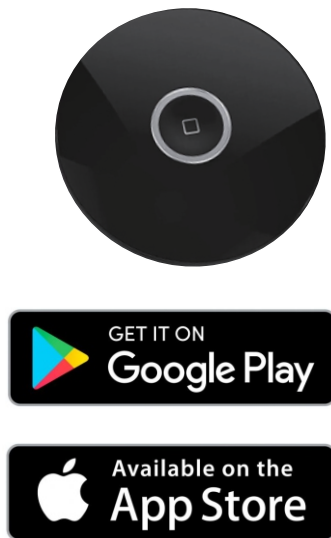


mastervue

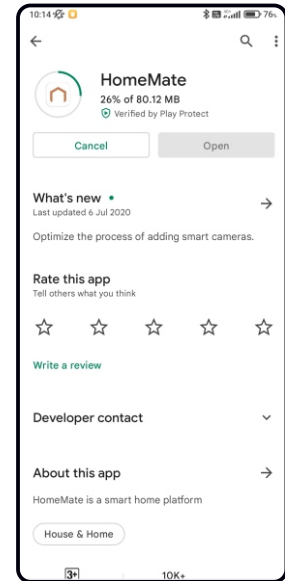
Smart Home Hub



1. Download & Install the App on your cellphone

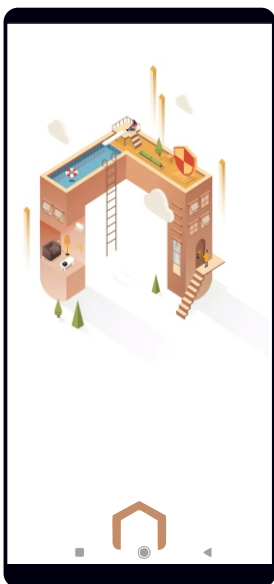


(1) Search "Homemate" on App Store or Google Play.

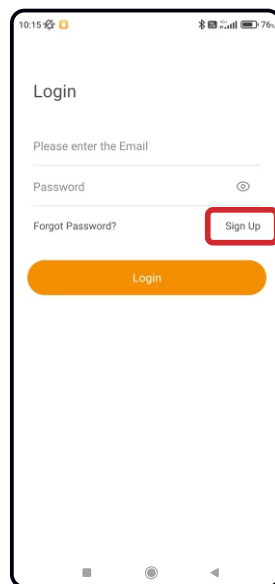


(2) Download the Homemate App on your cellphone.

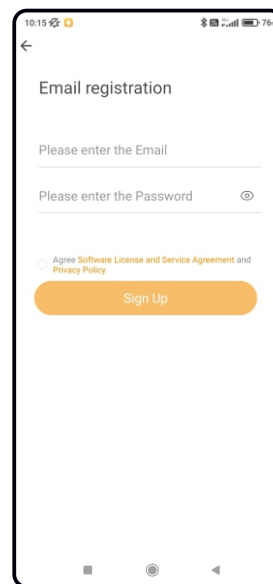
2. Sign up an account on the App



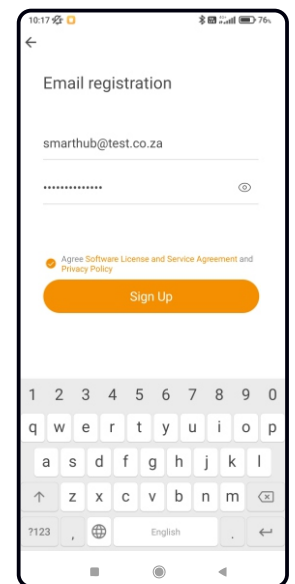
(1) Open the App



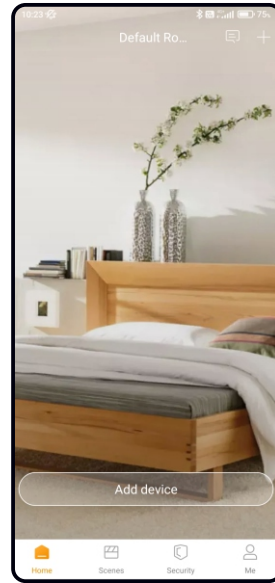
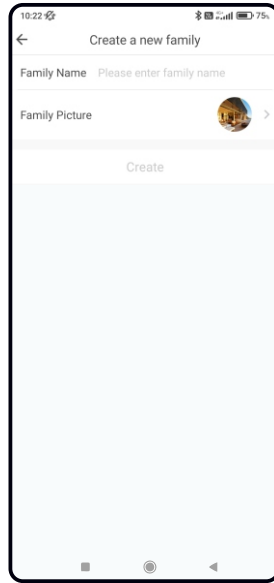
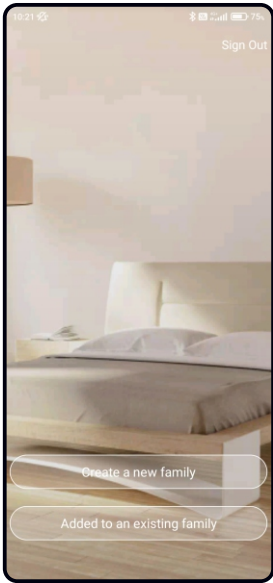
(2) Sign up an account by clicking "sign up" (If you already have an account, login in your account directly).



(3) Sign up with your E-mail address and set a password to your account, remember it, this will be your Login account ID and Login password.

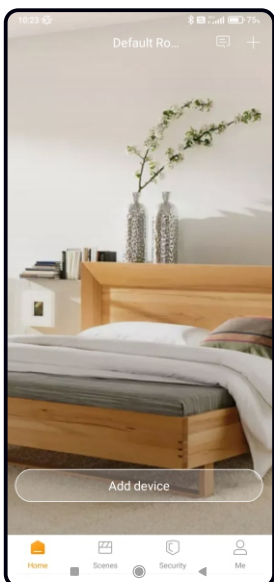


3. Create a new family name

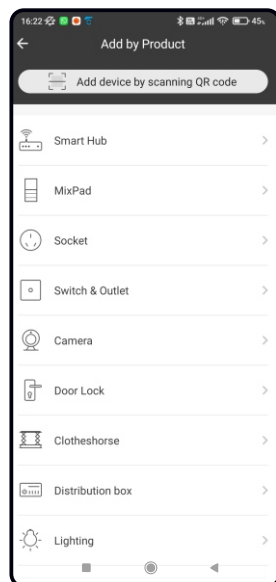


(1) Create a new family name (house name) under your account

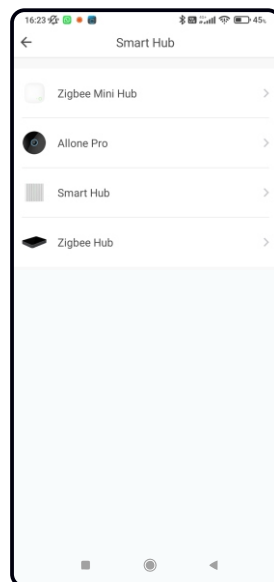
4. Connect the smart home hub to APP (follow the steps below)



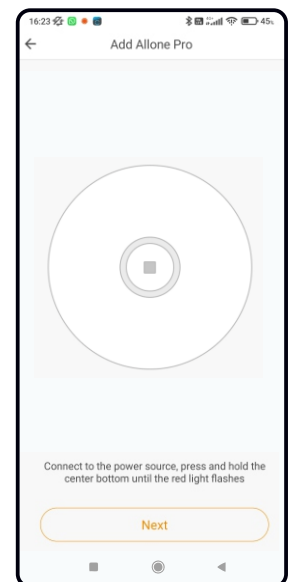
(1) Tap "+" on top right of the APP to add Smart Hub



(2) Choose "Smart Hub" menu



(3) Choose "Allone Pro RF"



(4) Hold on, before you tap "next", we need to work on the Smart Hub.

Please follow set up steps below in next page

5. Connect the Smart Home Hub to APP (Follow these steps below)

Important note: Please make sure firewall or network ports are not restricting your smart home hub



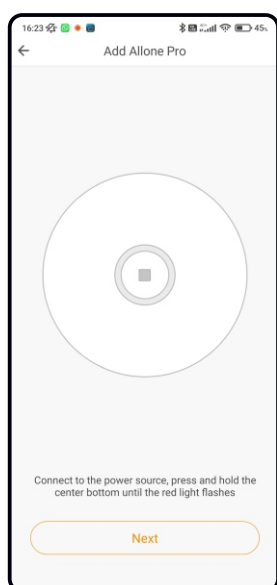
(5) Power on the hub



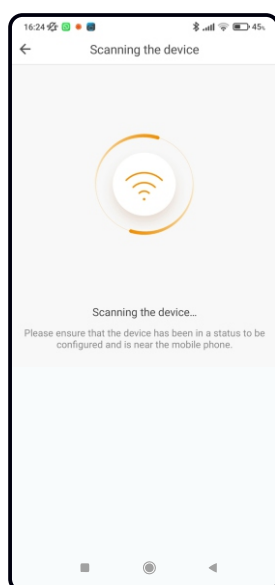
(6) Keep holding central button



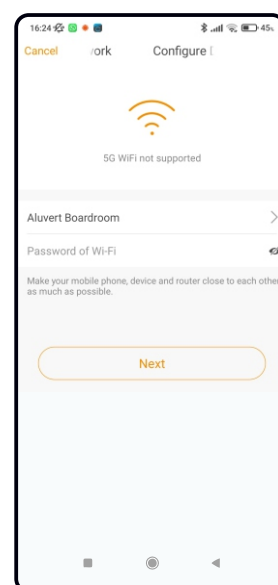
(7) Keep holding until red light flash quickly



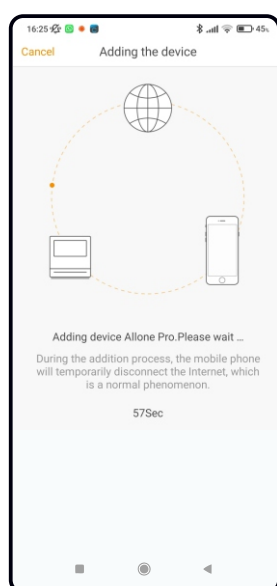
(8) Tap "Next" on the APP



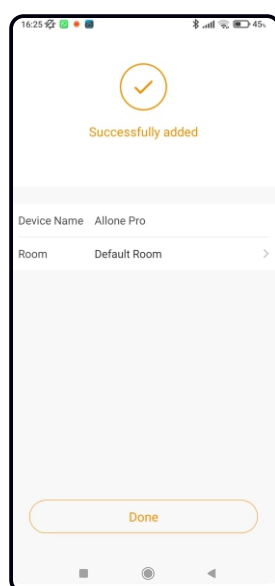
(9) The App will now search for the hub



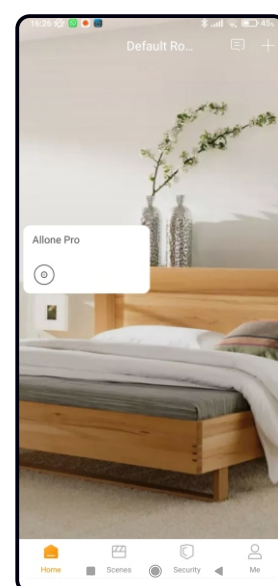
(10) Once the hub is found, "please input your WIFI password"



(11) The hub will connect to your WIFI



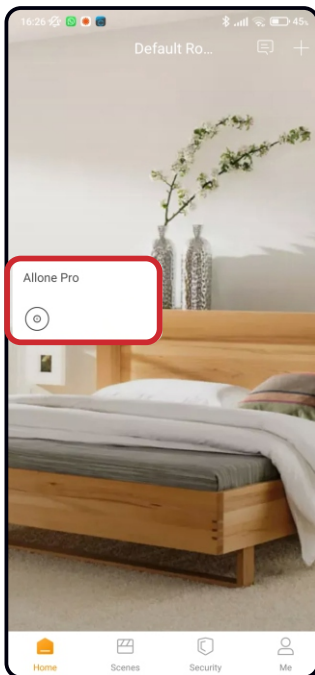
(12) The hub is now successfully connected. click "done"



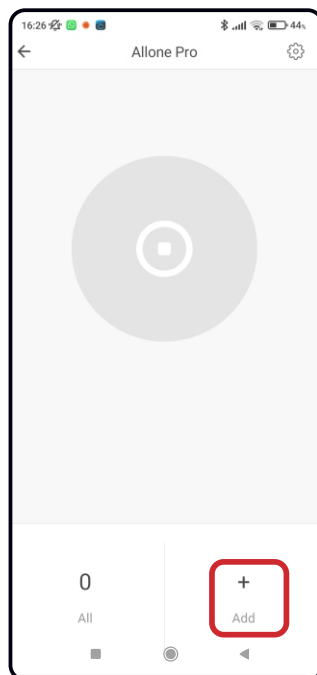
(13) Now that the hub is connected, we need to pair the motor

6. Pair motor to the APP (Please follow below steps pairing motor to APP)

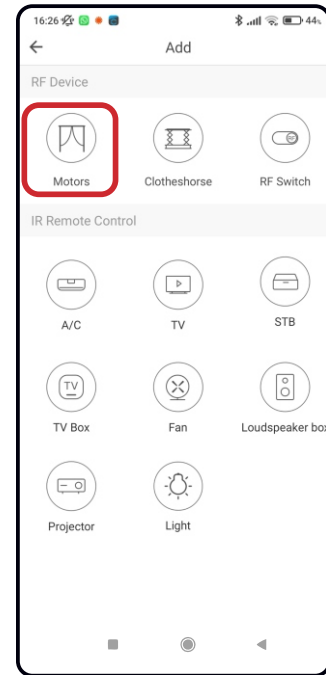
Important note: Please make sure firewall or network ports are not restricting your smart home hub



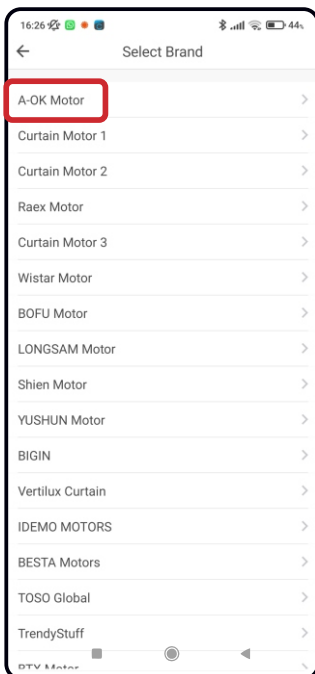
(1) Tap the Allone Pro menu



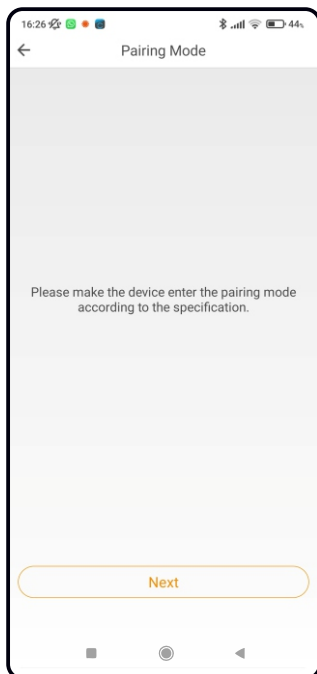
(2) Tap "Add" button, (bottom right)



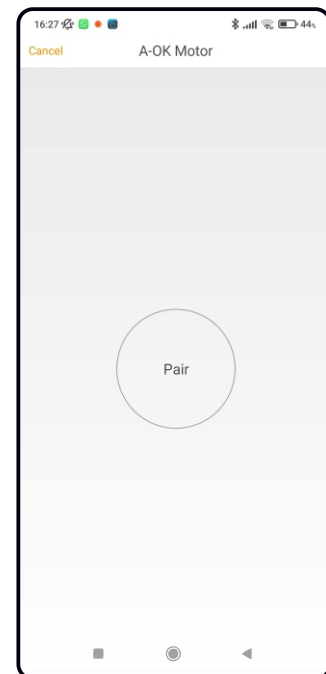
(3) Choose the "motors option" (top left)



(4) Choose "A-OK motor"

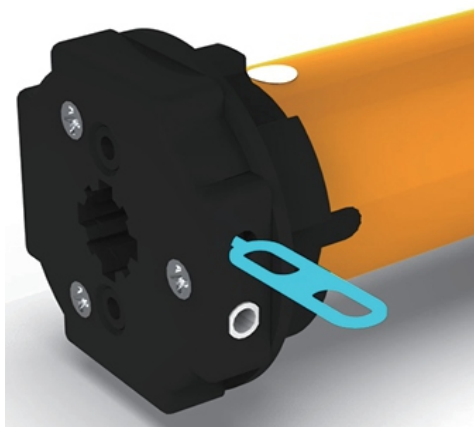


(5) click "next"

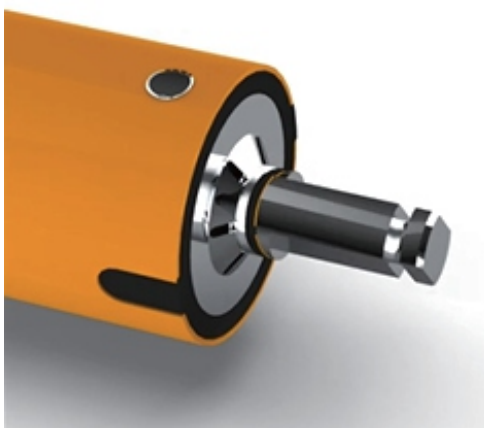


(6) Enter "pairing mode" on your motor, before clicking "pair"

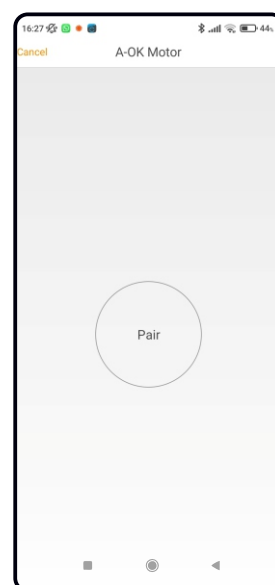
7. Pair motor to the APP (following use electronic limit motor for demonstration)



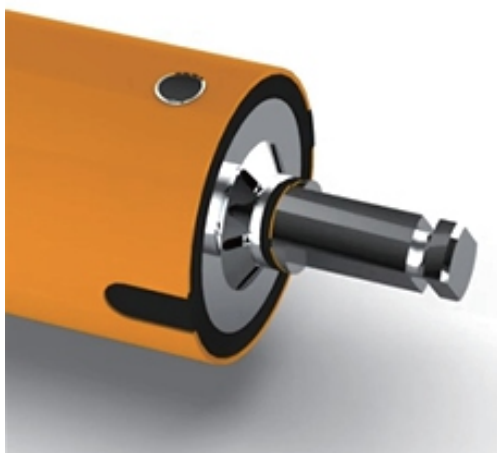
(7) Press setting button on motor head for 1 second.



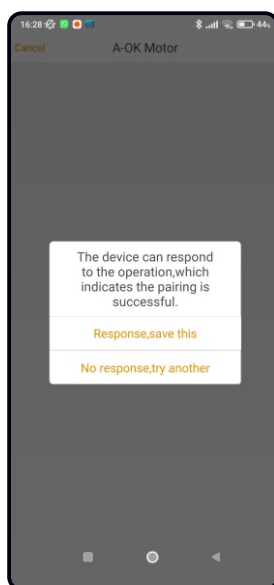
(8) Motor will jog once



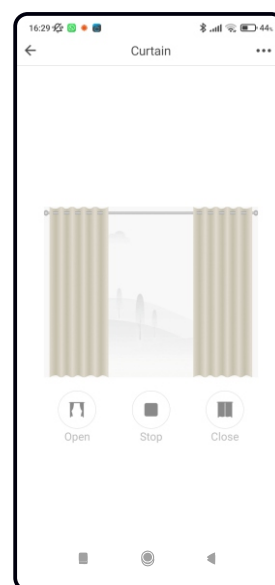
(9) Tap "pair" on the App



(10) The motor will jog once paired

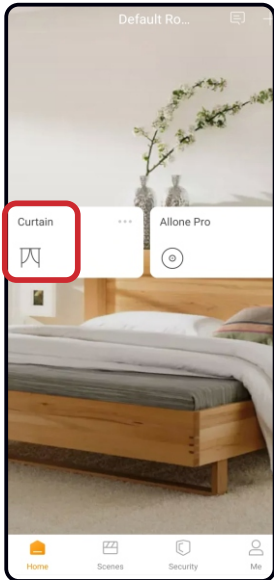


(11) After the motor jogs, the hub is paired with the motor. Now click "Response, save this"

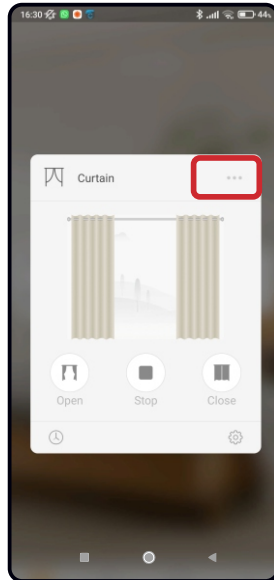


(12) Now you can control the motor using the APP

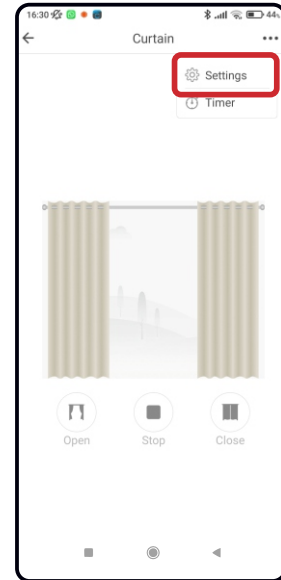
8. Name your shades (you can name your shades by following steps)



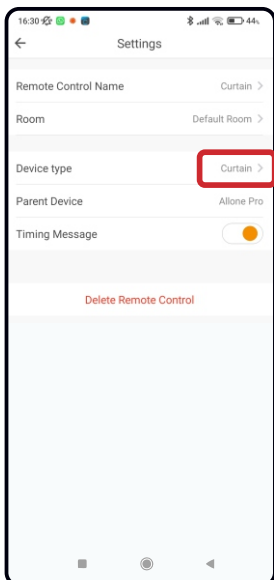
(1) Click the motor that you want to name



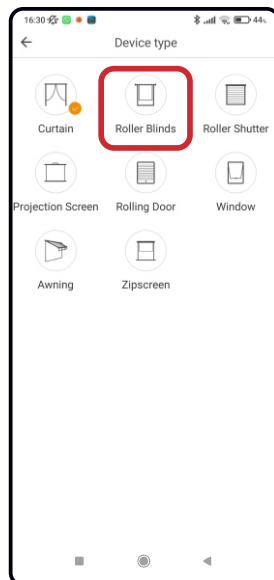
(2) Tap setting menu at the top right corner



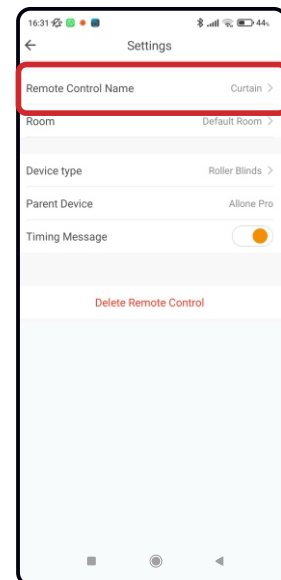
(3) Tap setting menu at the top right corner and click the "settings" option with the cog



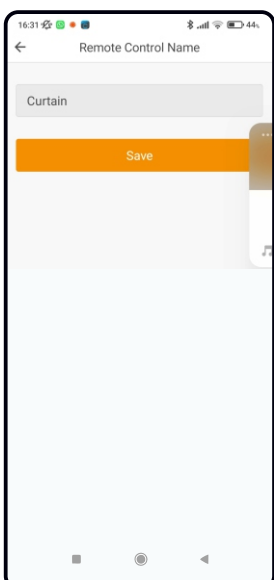
(4) Click "device type"



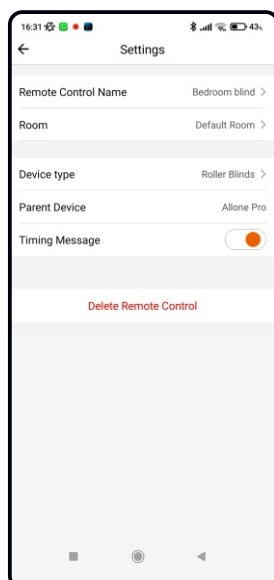
(5) Select the Roller Blind Option



(6) Rename the Roller Blind by clicking "Remote Control Name"



(7) You can now name your blind, example "Bedroom Blind"



For more detial manual instruction, you could access to following link or scan the QR code
<https://youtu.be/wXkn74y2pYo>



mastervue

Smart Home Hub

